

ScannerDigest Newsletter

ISSUE 62

OCT-NOV-DEC 2012

- ◆ **NOAA NWS Philadelphia @ Mount Holly NJ** by *Sal Marandola*
- ◆ **Hurricane Sandy Monitoring - NYC Metro** by *Phil Lichtenberger*
- ◆ **Android Scanning and Amateur Radio** by *Robert Gulley*
- ◆ **VHF Aircraft Monitoring In The Des Moines IA Area** by *Jim Lawrence*
- ◆ **Scanning Fall Special Events Washington D.C. Metro** by *David Schoenberger*
- ◆ **Allegheny County PA Public Safety System** by *Frank Speicher*
- ◆ **New General Editor Appointed**
Alan Cohen, KB3QLE

GENERAL EDITOR

Alan Cohen
ScannerDigest@gmail.com

We have a new appointment for General Editor. **Alan Cohen KB3QLE**, will be taking over the duties of General Editor.

Alan has been into the scanning scene for over 40 years. He has been involved in electronics sales and has a passion for military air scanning. He has also been instrumental in programming a variety of the newer Radio Shack digital trunked scanners for friends and co-workers. Alan has acquired his "ham" ticket a couple of years ago and enjoys amateur radio communications.

Tomorrow brings us a new challenge to scanner monitoring. Many radios are being upgraded to technology that now yet available to scanner enthusiasts. Mototrbo, NXDN, iDAS, etc. It is hoped that the major scanner manufacturers will develop receivers that would be capable of receiving these signals. At this point, many systems not being received by scanners are being made

available and "streamed" over the net, thus no need for the radio. A broadband connection is a must now. Apps for iPhone or for Android are readily available for free or for a small fee. Transition into the 700 MHz public safety band is currently underway and now creating a need to vacate for newer grounds. Hobbyists are wondering whether their equipment will make this transition as well. Computer-aided-scanning is now the norm. Many SDR need the use of computers and it is almost a need-to-have to walk through the complexities of programming these newer scanners. Uniden's Home Patrol has made it really simple to set up a monitoring station without the need to know programming and without the use of a computer.

The lines are blending closer and closer as various radio hobby niches are now enjoying the monitoring hobby lately. Scanners and wide-frequency communication receivers, amateur radio gear that can tune-in throughout much of the VHF-LO, VHF-HI and UHF bands now are able to enjoy the scanner monitor hobby too!

We've come a long way from crystal-controlled scanners like the Bearcat IV, Realistic PRO series hand-held only capable a 4 VHF frequencies, Fanon-Courier, Midland 4-channel UHF (Port-a-pack) and few other brands come to mind that were part of my radio corral back in the mid-70s.

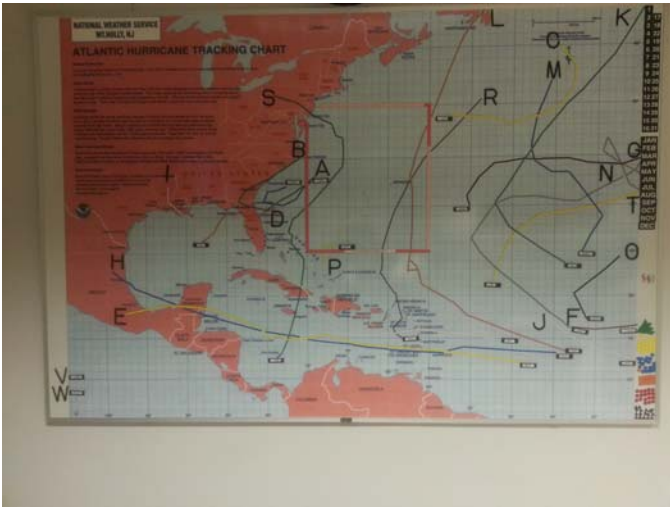
I'm sure I'm in familiar company with many scanner buffs that have been through similar experiences throughout the years. If you have a story about your scanning history, please send it to us. Be sure to include your shack photos too! Wishing the staff and readers of the Scanner Digest Newsletter a Happy New Year!

Alan

NOAA WEATHER RADIO MT. HOLLY NJ (PHILA)

By Sal Marandola NC3U

On November 30th 2012, I had the pleasure of working the "Skywarn Recognition Day" at the NOAA office in Mount Holly, New Jersey. What is Skywarn Recognition Day you ask, it's a day set aside when most of the NOAA weather stations around the country say that it appreciates all the efforts of the Skywarn observers who call in and make reports during inclement weather. The radios are operated by HAM radio operators on a volunteer basis. The object is to try and make as many contacts as possible and try to make other HAM's aware of what you're doing. Making contacts with other weather stations is always a plus.



Shown above is the highly technical tropics board.



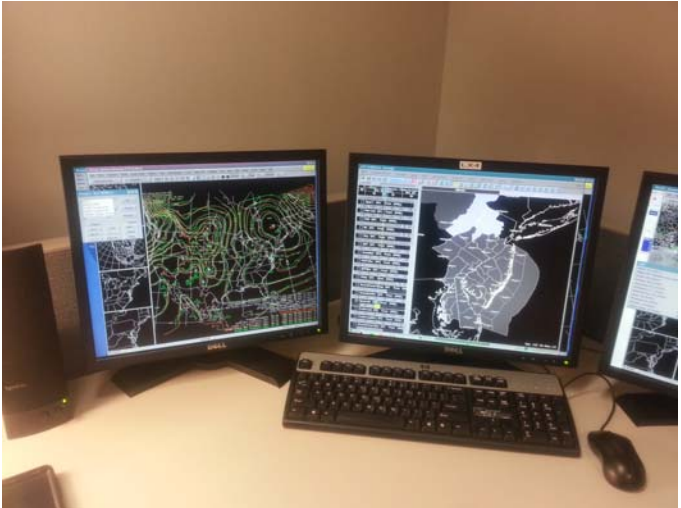
Here is what we all hear "NOAA ALL HAZARD RADIO" this console is mostly automated but can be put into a override mode if needed



Photo above is the backup weather station or as they call it, "Station 2"



Here is another look at the consoles



Here is a typical console view that the meteorologists can bring up at any time there are quite a few views available to them. The main radar is out of Fort Dix, New Jersey



Logos depicted that is placed in the inlay on the raised floor of the main room

The Chairman of the Mount Holly Skywarn Advisory Committee **Lou Ruh WX3I** puts all this together in our area. He sets up the scheduling for operators and setting up the radio equipment. If you're interested in becoming a Skywarn observer please go to this link for info <http://www.nws.noaa.gov/skywarn/> . In conclusion I would like to say thank you to Skywarn and NOAA for letting me participate in this worthwhile event.

Sal Marandola, NC3U

Glenn Mitchell has been grateful to provide an updated FCC license post for new/modified licenses for some of the column writers. This has proven to be a valuable resource since many licensees are in the process of switching over to narrowband technology and the changes are evident by the FCC license modifications. These posts will aid the regional columns on an as needed basis. We thank Glenn for his hard work and cooperation in using some of the frequency licensing information extracted from the FCC database files.

PHILADELPHIA METRO *Column Editor Wanted*

Following information provided by Glenn Mitchell

IG WPYQ303
SOUTHEASTERN PA TRANSPORTATION AUTHORITY
 160.35 FB 161.175 MO
 160.35 FB 161.175 MO
 160.35 FB 161.175 MO
 160.35 FB 161.175 MO

IG WPYU588
SOUTHEASTERN PA TRANSPORTATION AUTHORITY
 160.59 FB 161.46 MO
 160.59 FB 161.46 MO
 160.59 FB 161.46 MO
 160.59 FB 161.46 MO
 160.59 FB 161.46 MO
 160.59 FB

IG WPYU591
SOUTHEASTERN PA TRANSPORTATION AUTHORITY
 160.35 FB 161.175 MO
 160.35 FB 161.175 MO
 160.35 FB 161.175 MO
 160.35 FB 161.175 MO
 160.35 FB 161.175 MO

IG WPYU594
SOUTHEASTERN PA TRANSPORTATION AUTHORITY
 160.38 FB 161.34 MO
 160.38 FB 161.34 MO
 160.38 FB 161.34 MO
 160.38 FB 161.34 MO
 160.38 FB 161.34 MO

CENTRAL PA *Column Editor Wanted*

Following information provided by Glenn Mitchell

PW WPYF666
CAMBRIA, COUNTY OF [COUNTY 911 CENTER]
 33.460 FB 155.175 FB
 33.480 FB 155.295 FB
 33.700 FB 155.340 FB
 33.940 FB 155.385 FB

PW WQA839
CAMBRIA, COUNTY OF
 453.200 FB2 458.200 FX1
 453.300 FB2 458.300 FX1
 453.550 FB 458.500 FX1
 453.500 FB2 458.600 FX1
 453.550 FB 458.650 FX1
 453.650 FB2 458.600 FX1
 453.550 FB

PW WQIP244
CAMBRIA, COUNTY OF
 453.525 FB 458.525 MO
 453.525 MO 453.225 MO
 453.525 FB2 458.225 MO
 453.525 FB2 453.550 MO
 453.550 FB2 458.550 MO
 453.525 MO



Many fire and incident notification groups exist today, there are choices of paid, or free and how much you want to receive. There are other online sources you can monitor such as twitter and the news media, but you have to use multiple sources.

USEMERGALERTS is a Free not for profit group, which allows you to pick which areas you want to receive and what incident types you wish to receive. UEA is owned by Thomas Perez-Hernandez & Jimm Mosso, both of whom are not new comers to the incident dispatch community.

UEA dispatchers follow incidents via scanner, online scanners, twitter and media outlets to get your the information you desire. UEA pages upward of 3000 calls per month across the United States. UEA is a newer company which is approaching its 2nd year of service and is constantly upgrading to provide the best service to their subscribers. The recent merging of Incident Alerts 1 (IA1) will bring over 4000 more subscribers. UEA is backed by a team of administrators with many years of paging experience between them, along with actual Police, Fire,



EMS and dispatch experience and work history. Incident pages will contain an address or location, city, state, details, and a source if someone else provided the incident.

UEA welcomes anyone to subscribe to receive alerts, and is also always looking for dispatchers in all areas. UEA has a 24/7 hotline where incidents can be called in to as well as an email address to send tips to. UEA's dispatchers are all volunteer and work as a team for a common goal of sharing information with subscribers. UEA's uses various sources to maintain a relationship with its dispatchers including a Zello voice chat room, available via desktop program or mobile application as well as a text chat service through Group Me.

Everyone is encouraged to visit the UEA website <http://www.usemergalerts.net> and subscribe or sign up to dispatch. Any questions may be emailed to support@usemergalerts.net

SOUTHEASTERN NEW YORK *Phil Lichtenberger*
c/o Monitor Long Island, Inc.
PO Box 1642
North Massapequa, NY 11758
w2lie@w2lie.net

Fortunately, for my family, we made it through Hurricane Sandy with minimal damage. Our hearts break for those who took the business end of the storm and who are displaced right now. It is amazing how a simple chain of meteorological events can turn a small disturbance of air into the "Super Storm" it became.

Before the storm made landfall in the New York and New Jersey area, I posted a list of frequencies and talk groups to my website that I thought might be useful:
<http://bit.ly/U5y9Kl>

As new frequencies and talk groups were discovered, I updated the thread, and posted them to my website's Facebook page to keep my followers updated:
<http://www.facebook.com/w2lie.net>

In addition to the info submitted on my site, I've reached out to others in the scanner radio community via Radio Reference [1]. This column is a summary of the information I was able to collect as active frequencies or groups. If there are any other groups or frequencies that are missing from this list, please submit them to me at w2lie@w2lie.net and we'll post them into the next issue of Scanner Digest.

Instead of publishing a list of OEM, Police, and Fire frequencies that most of us already have at our disposal either from our own logs or online sources, I want to discuss new listening opportunities. Besides, isn't that what part of this hobby is all about? Discovering new activity on the air and listening to it and finally figuring who it is by listening to the details? It is a shame that it sometimes takes an act like Hurricane Sandy to remind some of us to think outside the box. I must admit, at times, I am guilt of this practice. We need to remember to take the time to leave our scan banks behind and hit that search bank for more activity.

I was extremely busy at work right after Hurricane Sandy. I spent countless hours which became days, and then weeks before it was time for a day off. Luckily, I was able to spend a majority of that time from working from home. VPN is a great thing! Working remotely has its advantages, and in my case, one of those advantages was "table top" scanning. No external antenna for me during work, so my searching was limited. However, my table top monitoring didn't disappoint. Again, as I suspected, local police and fire were busy. My local area had multiple fires burning at the same time. After the storm, county police had moved a lot of their force to help and patrol areas hit the hardest, Fire Departments were working relief tours and mutual aids. Emergency management offices were active both before and after the storm struck.

Eventually, I did wipe my PRO-106 clean and load it up with all the Military, Mutual Aid, and other groups I thought I would finally hear activity on. The change of tactics did not disappoint. One of the first things I threw into the scanner was the Long Island Power Authority (LIPA). While the agency as a hole got a bad rap in the press, their field crews were unbelievable over the radio. I must say that the linesmen were very calm, collected, and well organized out in the field.

I was very interested in scanning the National Inter-Op frequencies. This would be one of the first times I thought I may be able to hear something in my area. I was able to receive a lot of planning and tactical operations on 8TAC92 (852.0125 pl 156.7hz) and 8TAC94 (853.0125 pl 156.7hz). 8TAC94 was eventually patched to VTAC13. My theory was starting to take shape. Frequencies that have been quiet for years are starting to come alive with activity.

We had Air National Guard helicopters flying over as they passed my house to scout out the areas to the south that were harder hit. I logged them on 234.600 AM, and Radio Reference Member TECH792 also logged ANG on 121.950, 123.100, 242.400, 283.000 [2]. Republic Airport in Farmingdale, NY became a hub for military planes to land and drop off much needed supplies. Civil Air Patrol was overhead as well. I was only able to receive them for a short time and logged them on

139.8750. I am curious to know if anyone else heard CAP activity on any other frequencies.

One of my biggest scanning disappointments was with FEMA, who is still in the area. I have been unable to hear them on any of the published frequencies. The closest hit I had was on 407.6625 P25 NAC421, but they were encrypted. I haven't had any other hits for FEMA. I continue to scan to see if I can locate them. Does anyone have any suggestions?

While most of my monitoring has been isolated to local operations, I know there is a lot more out there to receive. If you are currently listening to Sandy Recovery, I would love to know what you have been hearing. Please e-mail me your logs to w2lie@w2lie.net and I will include an update in the next Scanner Digest Newsletter.

To all of you who live in the hardest hit areas, I can't imagine the pain, loss, and heartbreak you are facing. I wish you the best and I hope that you and your families are finally out of harm's way and can start the rebuilding process.

Finally, I hope to see some of you at Ham Radio University 2013. I will be giving two classes this year at Ham Radio University on January 6th, 2013. The introduction to Scanning class started in 2011 and has been full every year. This year, I will also be giving an Advanced Scanning class. While the material has yet to be finalized, I will be spending more time describing trunking and using computer software to enhance your experience. As of now, the intro class will begin at 9am with the advanced class to follow at 10am.

73
Phil Lichtenberger / w2lie

[1] <http://bit.ly/11BGZ6X>

[2] <http://bit.ly/VdNabu>

MILITARY

*Daniel Myers K3NXX
823 Horsham Rd.
Horsham, Pa 19044-1209
dan@domyers.com*

No column this Issue

NEW HAMPSHIRE

*John Bolduc
NIQGS@yahoo.com
ScannerDigest@gmail.com*

New Durham Fire Department is no longer listed as a member of the Lakes Region Mutual Fire Aid Association. Upon listening to a recent fire I can confirm they are now dispatched by Strafford County Sheriff's Department on 154.370 DPL 723. Unit identifier is now 25## - . It was 16## with Lakes Region.

Middleton Fire is now also dispatched on 154.370. Previously they were dispatched on the County PD channel 154.725 in analog, as opposed to digital for the police units. Middleton was using unit identifier of 55##.

Grantham NH Fire has been heard being dispatched out of New London dispatch lately on 154.995 PL 136.5. Previously I've heard them being dispatched out of Hanover on 153.950 PL 141.3.

Recent ARES drill during November 2012 in southern New Hampshire included the following frequencies on 2 meters.

Partial List: Some digital, some voice, some mixed

SIMPLEX:

144.950	145.570	145.730
146.475	147.405	147.435
147.510		

REPEATER:

146.730	146.895	146.850
---------	---------	---------

During a recent regularly scheduled net on the 147.000 MHz PL 100.0 with a minus offset Saddleback (Deerfield NH) Repeater, considerable harmful interference was interrupting the net. The interference was traced to the local CERT in Londonderry NH who was using the input frequency to the repeater as their simplex net frequency. I've been told that public safety officials have been notified of the transgression and that further more serious action is pending. From what I've been told the group was informed forty-five minutes prior to the scheduled net that they were using the input frequency to the Saddleback repeater, but choose to ignore the advice.

During a very recent event in which this same CERT group was a participant in, they though the were making announcements to hams heading in to the event and offering to give directions. Unfortunately the transmissions were going out simplex, low power, on the output frequency of the repeater and were barely being heard a mile away. This was corrected for a transmission or two after a ham on site mentioned their gaff to them. However, when they changed operators, it reverted back to the original manner.

Recently heard is that the 145.210 repeater in Chester NH is coming back on line to rejoin the 145.210 network of repeaters in Maine.

I recently had the pleasure of completing a 2 meter FM contact to Nova Scotia during a nice band opening (lift).

Several days earlier I was able to receive DTV channel 69 (RF17) licensed to Patterson NJ (Metro New York City). I received the same a couple of days later, and this time I had the camera ready.

The infamous CB and amateur radio operator KB1QBC recently had to relocate his home QTH to less desirable (for him) location after being "shown the door", by the new landlord. Thank you to the new landlord, my second cousin Bobby.

MAINE

Loren Fields
hornsmoke@zwi.net

Greetings, and welcome to this edition of the Maine Scanner Digest column! Jumping right in, it is important to note several changes in narrow-banding (follow the link)

http://content.govdelivery.com/attachments/MEMEMA/2012/08/30/file_attachments/158552/August%2B2012%2BSCIP%2BNewsletter.pdf

List of Maine Emergency Management Agency (MEMA) repeaters and tones:

<http://www.franklincountyema.org/db/pdfs/MEMANARROWBANDPRIMER.pdf>

MS/CommNet map, as of March 2012:

<http://www.maine.gov/oit/services/radio/mscommnet/MSCommNetMapMarch2012.pdf>

MSCOMMNET Maine State Communications Network

Dow AFB/ MeARNG (co-located with Bangor International Airport (BIA) is running a new repeater: "New" Dow AFB/BIA repeater frequency in Bangor, ME on 165.1125R with a NAC of \$295

"Data churning" intercepted in central Maine: 173.9125, 152.8000, 470.2125 w/ NO licenses listed. No pl/dpl nor P-25. Waiting to test for YG-style trunking. Just keep logging, both by hand in a notebook and via computer software. One never knows what one will "find."

"Tower hopping": the act of visually scanning skylines to discover tower sites, then using Google Earth to research possible approaches to each site. Utilize the "PrintScreen" feature on your 'puter or tablet, paste into an email and store it on whatever device you take in to the field.

Here's a little oddball site in Windsor, ME:

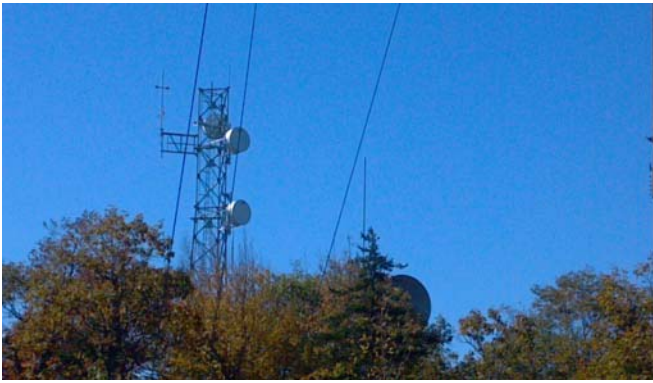




The next pictures come from atop Hatchet Mountain in Hope, Maine. The site is relatively easy to access by hiking up an established trail then blazing straight up.

No laws were violated in the taking of these pictures (like that disclaimer?) =:-)









New site being installed as part of communications infrastructure upgrades, above and several pictures below:



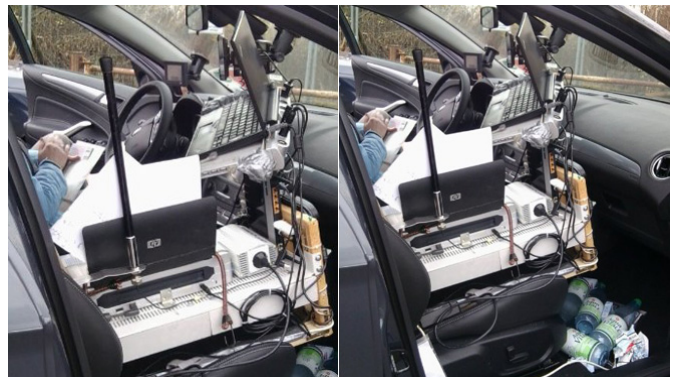
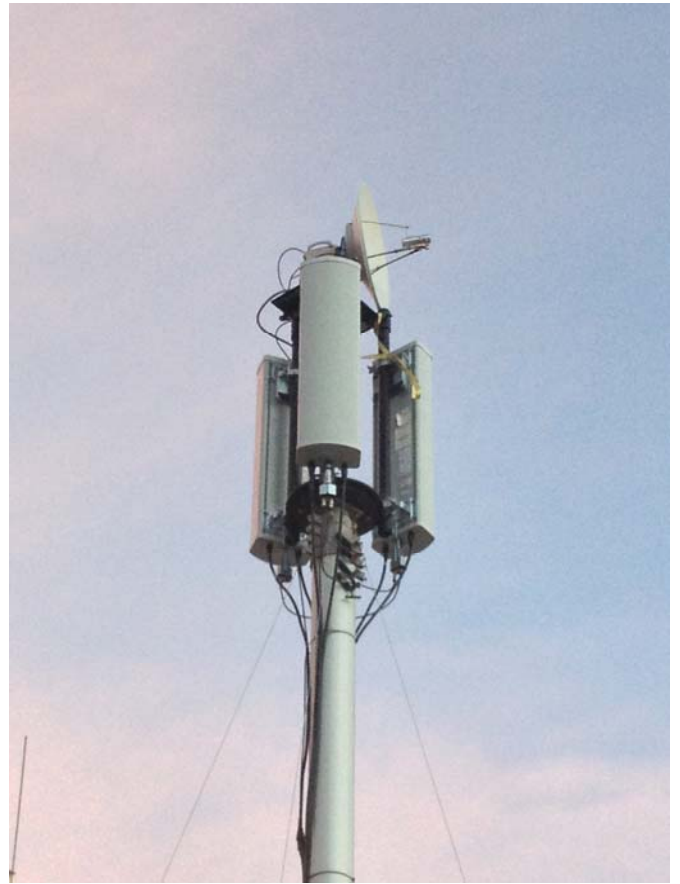
The Daily Bulldog did a fantastic story on this site, to include the pictures (including the one above by Mr. Steve Mitman) Here's the link for more spectacular pictures and the erudite article:

<http://www.dailybulldog.com/db/features/mt-blue-antenna-hiding-in-plain-sight-as-fire-tower/>

"Identify the Type of Tower": these next pictures were contributed to me from far west of the State of Maine. I won't say which state, but challenge you to identify the usage of the pictured portable tower system:



Can anyone relate or compare to this mobile office installation?



Link to article:

<http://www.foxnews.com/leisure/2012/11/15/german-police-catch-speeder-with-over-top-mobile-office/>

Under the "Neato-Keen" category:

<http://www.k1pgv.com/ScannerCast.html> ~ This is the scanner streaming software where you just need a media player that allows for links such as Winamp

Here's a great primer to P-25:

<http://wiki.radioreference.com/index.php/P25>

Here is a good-looking and very versatile, highly practical "on the go" installation via the Havis-Shield platform:



That's all for this edition's Maine column. Please contact me (Loren Fields) if you are ever in the Augusta, Maine area and would like to talk communications.

I also encourage you FaceBook denizens to visit my [FaceBook page](#) and say "hello!"

Until next time, keep your hand on your wallet, your powder dry and your shot group tight. **God Bless America**, and **obey Acts 2:38. Fields out.**

IOWA

Jim Lawrence
c/o Scanner Digest
ScannerDigest@gmail.com

VHF Aircraft Monitoring In The Des Moines Area

Prior to arriving in Iowa, I confess I hadn't done much homework about the monitoring scene in Iowa. I had a general familiarity with the public safety systems in the state from years of visiting family here.

But my real interest lies with things that fly, so one of my first tasks after I got the radios unpacked and the antenna set up was to see if I could figure out the frequencies being used by civilian and military aircraft in my area. One cannot live along the I-80 corridor in Iowa and not be impressed with all the high altitude traffic that passes overhead, most of it either heading west or east. So I turned my attention toward finding the frequencies these aircraft were using.

I set a scanner up to search the civilian VHF range, 118.0000-136.9750 MHz, and started to hear lots of traffic almost right away. But sorting out which aircraft the traffic was coming from and where the aircraft were wasn't easy.

Then I remembered that the FlightAware website tracked civilian aircraft in flight with a small time delay. So I set up my scanner near a computer and started to watch and listen. That certainly made things much easier and before long, I was able to determine that the high altitude traffic going overhead were working Chicago Center on 125.5750 and 128.5250. After a few days of searching, I was fortunate to hear an aircraft heading into my local airport and talking to Chicago Center on 132.8000. Now I had a good base of frequencies from which to operate. The only factor that made things difficult was from my location, I couldn't hear the ground side of any transmission; I could only hear the aircraft.

What made my job more difficult was the fact that I live near the boundaries of several different air route traffic control centers and their sectors. For instance, to my east, most low altitude traffic is handled by Chicago Center on 132.8000. However, just to my south, Chicago works low altitude traffic on 118.1500. And, there is some low altitude traffic that is handled on 127.0500 in the Des Moines-Marshaltown-Newton area, where the ground side of that frequency can be heard. Without lots of patience and study, it can all become quite confusing.

Here is my list of Des Moines area VHF air traffic control frequencies. I'll have a look at the UHF side of aircraft monitoring in a future article.

- 118.1500 – Chicago Center handling low altitude aircraft southeast of Des Moines
- 118.3000 – Des Moines tower

- 119.1750 – Ankeny Regional Airport Terminal Information
- 119.5500 – Des Moines Airport Terminal Information
- 119.6000 – Minneapolis center over southwestern Iowa
- 121.9000 – Des Moines ground control
- 122.3500 – Fort Dodge Flight Service Station
- 123.0250 – Helicopters at Mercy hospital
- 123.9000 – Des Moines approach and departure control
- 124.1000 – Minneapolis center over northern Iowa for low altitude aircraft
- 124.8750 – Minneapolis center handling high altitude traffic over western Iowa
- 125.2250 – Chicago center high altitude traffic for aircraft headed over Dubuque
- 125.5750 – Chicago center high altitude traffic between Davenport and Des Moines
- 125.6500 – Minneapolis center low altitude traffic south of Des Moines
- 126.3000 – Des Moines approach and departure control at Newton, Iowa
- 127.0500 - Chicago Center low altitude traffic, ground side can be heard in Des Moines
- 127.7750 – Chicago Center high altitude over eastern Iowa
- 128.5250 – Chicago Center high altitude traffic south of Des Moines
- 129.5000 – “Mercury” company at Des Moines
- 132.7250 – Minneapolis center high altitude over southwest Iowa
- 132.8000 – Chicago Center handling aircraft northeast of Des Moines
- 133.7250 – Kansas City center over northern Missouri
- 134.0000 – Minneapolis center handling low altitude traffic north of Des Moines
- 134.1500 – Des Moines clearance delivery
- 134.2500 – Minneapolis center high altitude traffic in Mason City area
- 135.2000 – Des Moines approach and departure
- 135.6000 – Chicago Center low altitude traffic in Burlington area
- 135.7750 – Minneapolis center working high altitude traffic, ground side can be heard in Des Moines

Incidentally, many smaller fields around the state use 122.8000 and 122.9000 for local traffic advisories among aircraft operating under visual flight rules and to announce their arrival or departure.

And that’s it for this issue. What are you listening to? Aircraft? Fire departments? Police? Railroads? It doesn’t matter what your listening passion is, send it along to me here at Scanner Digest and I’ll include it in a future column. Happy listening!

AMATEUR RADIO

*Robert Gulley AK3Q
ak3q@ak3q.com*

Android Scanning and Amateur Radio

A few short years ago a title with Android Scanning in it would have referred to working with robots or an Isaac Asimov book. Now of course it refers to using Android devices to bridge the world between scanning and amateur radio. (iPads/iPhones have many of the same applications and probably more; I will discuss things from the Android perspective since that is what I own, but most observations should apply equally to Apple apps as well.)

I am a Johnny-come lately to the world of tablets and the world of “apps”, having resisted pretty well until just recently. The main reason was cost of course, since I could not really afford an iPad or an iPhone just for play. After watching some of the Android tablets come down in price, I eventually bought one at a fairly reasonable price, at least that’s the story I am sticking with for now! I have found these modern tablets to be interesting, useful, and fun, and therefore worthy of my time, but certainly not essential. There is nothing here which one cannot replicate on a regular computer; what makes it useful is the portable nature of the beast, and the simplicity with which you can operate them.

Scanning

Anyone familiar with RadioReference knows they offer live streaming of scanners from around the world. While this has been available on the computer for some time, there are several good programs, or “apps” available for Android devices, both phone and radio. While live streaming is nothing new, I find myself more interested in them when I do not need to be tethered to my computer to listen in. While I spend most of my scanner time listening to real scanners covering events local to me, when streaming I like to listen to other cities or countries just to hear what is going on somewhere else in the world. I may someday add a stream to the Internet from my location, but that is a project for another day.

Like streaming audio on a computer, the tablet app can play the feed in the background while I work on something else. Fortunately, because there are so many amateur radio related apps, I can enjoy my radio hobby all the more while not missing a beat with the scanner feed. Like a live local scanner, there can be lapses in the action where nothing is heard.

The downside to this with an Internet stream is that you only get one frequency/location unless the person providing the stream allows their originating scanner to sweep through multiple bands. I use two versions of a program called Scanner Radio (Pro), with one version free and the Pro version costing a couple of dollars. With both versions loaded you can listen to two different stations at

once, and this helps with some of the dead air time. (Side note: any programs mentioned here are not endorsements, just reference; my only goal is to describe some of the things I have found useful or interesting.)

For example, one stream from my area covers local police and fire, as well as the state police. Other streams may only cover a single frequency from given locale. While this is an adjustment from regular scanning for those used to covering dozens of channels at the same time, I still find it quite interesting as an alternative to local scanning, especially when I am away from home. As long as I have Internet connectivity I can scan away!

Amateur Radio Apps

There are a lot of amateur radios and shortwave listening utilities available for your Android phone or tablet, and some of them are quite interesting. For example, if you are into satellite work you can use several different programs to predict various satellite passes, and even track space junk as a bonus (ISS Detector). Another similar program is SatTrack. I like to be able to quickly glance at upcoming flyovers when I might be able to squeeze in some radio time without having to fire up the computer, or without having to carry a laptop around.

Another of my areas of interest in the radio hobby is shortwave listening, and there are several programs available for checking program/station schedules. Both Shortwave Schedules and SWBC allow various forms of searching by band, frequency, station or location, or time to see what you might expect to hear. Add to this several propagation prediction programs, and several Beacon programs, and much of the radio spectrum can be checked right from your phone or tablet to see what you are likely to hear.

For amateur radio folks, a useful application is RepeaterBook which allows you to look up repeaters by distance, call sign, band, and location. An interesting feature is that with additional interface, you can link directly to a Yaesu 857/897 or an 817 to set the radio to the repeater you want. Working through the CAT interface the radio will automatically be set to the correct frequency, mode, and CTCSS code.

A similar program is RepeaterFinder which also give repeater info, as well as giving a map option to show locations, and includes information such as Echolink, DSTAR, or IRLP node access. I really like having the ability to see where the repeaters are located, especially when figuring out where I am likely to have the best access. Of course, if you are using these applications while mobile, some of the features should not be accessed unless you are stationary—they would be way too distracting otherwise!

Propagation

Propagation is a topic many scanning enthusiasts pay little or no attention to, and I was like that before getting into

amateur radio. Since I have covered some propagation issues in an earlier column, I won't repeat all that information here. In a nutshell, VHF/UHF propagation is dependent on time of day, weather conditions, and the time of year/season. Perhaps you have received unusual signals at different times and wondered what was going on. Or perhaps you have been listening to a local repeater when all of the sudden there was someone coming in from 50, 100, 200 miles or more away. You are experiencing the effects of propagation. Signals are bouncing off the atmosphere or "skipping" which allows for distant reception of signals otherwise silent.

Another common example of propagation follows seasonal variations. Fall and winter are excellent times for me to receive police and fire signals from a county some distance away from my location, while other times of the year the signals are broken up enough that I keep their bank turned off.

One of the most interesting forms of propagation is tropospheric ducting which allows signals to travel along a "duct" or layer of the atmosphere brought about by temperature inversions. Storm fronts with major temperature shifts are prime times for ducting to occur, and keeping an eye on local weather conditions can signal when you might be able to hear stations from quite far away. Sometimes the openings last only for a few minutes, but often they last for several hours or even more.

There are propagation applications available for checking likely conditions, including beacon programs and propagation prediction programs. DroidProp is a program which allows you to enter information about your radio setup including antenna, transmitting power, mode and antenna. (Of course for a reception-only station you can fudge the transmitting power, say 50 watts, to see what areas will be open for you.) While the program has something of a learning curve, it is very useful and worth the time.

NCDXF Beacon is primarily an HF beacon program, but includes 10 meters which can give you a good indication of what might be happening from 25 MHz to 2 meters. If beacons are being received in your general area from a particular location, you may very well hear some transmissions from these same areas.

DX Spotting

Another useful way to check for propagation is to check DX spotting programs for reports of folks who have received signals from what are considered DX spots. If you have some extra space on your scanner or amateur radio, you might want to investigate some of the possible repeaters or police/fire frequencies several hundred miles away from your location and monitor them when DX conditions look promising.

DXCluster is an excellent app for checking DX spot reports, allowing you to search by band as you connect to different nodes around the world. Keep in mind while you may not be working a particular mode, checking different bands and different modes allows you to get a sense of propagation, both in terms of immediate use and in terms of learning propagation patterns. DXCluster works on HF and VHF/UHF bands up through 440 MHz.

Apps Appear Daily!

One of the interesting things about Android and iPad platforms is that new apps appear daily, and many radio enthusiasts are writing free, or nearly free programs which have some great uses. I enjoy just seeing what's available, even if a particular app may not have immediate use for me. Being able to pull up scanners whenever I have an Internet connection is cool, and being able to have a small computer with useful apps with me without requiring a lot of space or power has really added to my radio enjoyment.

One more interesting app is Ham Radio Tools which has info for amateur radio bands and formulas, but also a vertical and J-pole antenna calculator which could be real handy for those wanting to build their own antenna.

I hope you will explore some of the possibilities out there, and I hope you will find some of these programs useful as I have. No doubt there will be many more innovative programs appearing on the horizon, and some of them might just become as indispensable as your favorite radio!

Until next time, here's hoping your radios are always on and putting you in the center of everything!

73,
Robert

WASHINGTON DC REGIONAL *David Schoenberger*
davidschoenberger@gmail.com

Scanning Fall Special Events

For this issue, I'll review some of the fall special events in the DC area. I was able to attend these events, and obtained many frequencies/talkgroups in use.

Bruce Springsteen came to Nationals Park in DC on Friday, September 14. Concert organizers apparently used several UHF MOTOTRBO frequencies. DC Fire used talkgroup 2096 (Special Events 1). CSC Event Staff (crowd control) used a repeater on 464.7500 [233.6], and simplex on 461.3875 [d152].

461.0375 [] Concert Organizers? (MOTOTRBO) (S)
461.0875 [] Concert Organizers? (MOTOTRBO) (S)
466.0875 [] Concert Organizers? (MOTOTRBO) (S)
466.1375 [] Concert Organizers? (MOTOTRBO) (S)

The National Book Festival was September 22 and 23 on

the National Mall. Organizers used rented UHF portable radios. Library of Congress security used 410.3375 [d411]. DC Fire used talkgroup 2112 (Special Events 2).

456.3125 [127.3] Golf Cart Escorts
459.9125 [173.8] Materials Distribution
462.9125 [107.2] Volunteers
463.6250 [d431] Car/Van Transportation?
464.5125 [85.4] Security?
466.0375 [233.6] Pavilion Managers
466.9125 [d311] Staging
467.3125 [d734]

The Marine Corps Marathon was October 28 in Arlington and DC. This is one of the largest annual events in Washington, and provides an abundance of monitoring opportunities.

Marine Corps Trunked System Talkgroups (Site 403):
63033 Route
63034 Medical?
63037 Medical
63040 "mascots for 10K finish" "VIP tent"
63041 "VIP Juliet on deck" "post"
63045 Shuttle Buses
63046 Information Technology
63047 "checkpoint"
63049 Start Line/Finish Line

Arlington Trunked System Talkgroups:

3 Police - Traffic Control
4 Police - Traffic Control
7 Police - Division 3
8 Police - Division 2
9 Police - Rosslyn area
10 Police - Unknown
11 Police - Traffic Control
20 Police - Tactical-type units?
21 Police - Tactical-type units?
25 Police - Tactical-type units?
42 Fire - Unknown
43 Fire - "Rosslyn Division"
44 Fire - Unknown
45 Fire - Rosslyn Metro?
46 Fire - Iwo Jima
47 Fire - Transportation
57 Police - SWAT units
58 Police - "suspicious packages" "plainclothes"
61 Police - Encrypted
70 Unknown
135 Coordination 1
222 Unknown - "staging"

DC Trunked System Talkgroups:

2096 Fire - Special Events 1 (Primary)
2112 Fire - Special Events 2 (EMS Liaison Officer)
2128 Fire - Special Events 3 (Transports?)
2592 Fire - Interoperability with MPD
33840 Emergency Management Agency
33872 Emergency Management Agency

Fairfax Trunked System Talkgroup:
1128 MEDCOM (Hospital Roll Call)

STARS Trunked System Talkgroup:
6149 Interop LE 7 (Traffic Control)

Metro Trunked System Talkgroup:
50160 Police - Tac 5 (Crowd Control)

123.0250 [CSQ] Helicopters
162.2500 [173.8] Capitol Police (Ch. 4)
166.7250 [127.3] Park Police (Ch. 1)
169.7750 [NAC 4C5] George Washington Parkway
451.7750 [d205] Crystal City Security
453.4750 [146.2] Red Cross
462.4000 [d226] Red Cross
462.7000 [97.4] "aid station" "cots"

CTCSS Explained

Today's land-mobile-radio communications systems have more features and functionality than ever before. In conventional radio, one of the most used and sometimes misunderstood features is CTCSS, which stands for Continuous Tone Coded Squelch System.

Different radio manufacturers give CTCSS different names. Motorola calls this feature PL or Private Line, Kenwood calls this feature QT or Quiet Tone, and GE/Ericsson/Harris calls this CG or Channel Guard. The amateur radio community simply calls this feature CTCSS. However, no matter what name you give CTCSS, it still functions the same.

CTCSS employs sub-audible tones — which are below the normal 300 Hz to 3,000 Hz voice range of the radio — and uses 67 Hz to 254 Hz tone modulation placed upon the carrier with the voice traffic. These tones are selected from an industry-wide accepted list of tones (see below) and generally are available in your radio's programming selection. The CTCSS function allows for encode and decode, whereby encode implies that a sub-audible tone is transmitted from the subscriber radio on the uplink and decode implies that a sub-audible tone is required to open the squelch on the subscriber radio receiver.

In the amateur-radio community, CTCSS encode is often referred to as "tone" in radio programming, while CTCSS decode is referred to as "tone squelch." In commercial radio programming, this same concept is referred to simply as PL, QT, CG (depending on the manufacturer) transmit and receive. You can have a different encode tone from the decode tone if your own transmitter is part of an interference problem.

CTCSS is used to access repeaters and networks, allows multiple users to communicate on the same frequency (channel) without receiving radio traffic from each other,

and is employed to improve radio operation in high RF noise, interference and congested areas. The operation of a receiver without CTCSS employed is known as "open carrier squelch" or simply "carrier squelch." Operating a receiver in open-carrier mode allows the radio operator to monitor and receive any traffic on that particular channel.

Normally, on a wideband system where the maximum deviation is 5.0 kHz, the CTCSS deviation on the encode side is 0.7 KHz. On a narrowband channel where the maximum deviation is 2.5 kHz, the CTCSS deviation is 0.3 kHz.

All conventional radio subscriber gear has a method for monitoring a given channel before transmitting. In generic terms this is called a "channel-monitor feature." Manufacturers are required to have this feature in place on their subscriber products and radio operators are required to use this feature and monitor the channel before transmitting, to ensure that they are not interfering with another user operating on the same frequency.

Portable radios have a monitor button, typically on the side of the radio body, for the user to press and momentarily determine whether another user is present on the channel. Mobile radios also can employ a button on the front control panel for monitoring; however, monitoring a channel with a mobile radio can be accomplished with the removal of the microphone from the hanger, provided that the radio programming enables the function to operate. This microphone function ensures that the radio operator is not distracted from operating the motor vehicle while using the radio.

Some other methods employed to aid the radio user in monitoring the channel before transmitting include the programming of the radio's LED indicators to illuminate while the channel is busy, even though audio is not heard from the speaker. Additionally, a channel-busy feature can be enabled during programming; this will inhibit the radio from transmitting until the channel is clear, which can be detrimental depending on how it is used. This feature is called "busy channel lockout."

Ira Wiesenfeld, P.E., has been involved with commercial radio systems since 1966, and has experience with land-mobile-radio, paging and military communications systems. He holds an FCC general radiotelephone operator's license and is the author of *Wiring for Wireless Sites*, as well as many articles in various magazines. Wiesenfeld can be reached at iwiesenfel@aol.com.

Christopher Dalton has designed, staged and implemented virtually every kind of LMR system in his two-decade-long career, including conventional, trunked, simulcast, Project 25, single-site and multisite. He holds an FCC general radiotelephone operator's license. Dalton can be reached at cdalton@fairpoint.net.

Next: The pros and cons of CTCSS.

What do you think? Tell us in the comment box below.
 Sidebar: CTCSS TONES

(All in kHz)

67.0	69.3 (or 69.4)	71.9
74.4	77.0	79.7
82.5	85.4	88.5
91.5	94.8	97.4
100.0	103.5	107.2
110.9	114.8	118.8
123.0	127.3	131.8
136.5	141.3	146.2
151.4	156.7	162.2
167.9	173.8	179.9
186.2	192.8	203.5
206.5	210.7	218.1
225.7	229.1	233.6
241.8	250.3	254.1

Note: Not every radio can do every one of these tones.

Common Emission Designators

Code ↓	Description ↓
60H0J2B	PSK31
100HN0N	Speed Radar (10525 MHz X band; 24150 MHz Ka band)
150HA1A	Continuous Wave Telegraphy (manually read Morse Code)
2K80J2D	HF PACTOR-III
2K80J3E	Single sideband suppressed carrier voice (USB, LSB)
3K30F1D	6.25 kHz SCADA link (CalAmp Viper SC - 173 MHz)
4K00F1D	6.25 kHz data NXDN (IDAS, NEXEDGE)
4K00F1E	6.25 kHz voice NXDN (IDAS, NEXEDGE)
4K00F1W	6.25 kHz voice and data NXDN (IDAS, NEXEDGE)
4K00F2D	6.25 kHz analog CW ID NXDN (IDAS, NEXEDGE)
4K00J1D	Amplitude Compandored Sideband (pilot tone/carrier)
4K00J2D	Amplitude Compandored Sideband (pilot tone/carrier)
4K00J3E	Amplitude Compandored Sideband (pilot tone/carrier) voice
5K60F2D	SCADA
5K76G1E	P25 Phase I CQPSK voice (typically used for simulcast systems - this is NOT P25 Phase II)
6K00A3E	Double sideband AM voice (AM mode in RRDB)
6K00F1D	SCADA Carrier Frequency Shift Keying
6K00F2D	SCADA Audio Frequency Shift Keying
6K00F3D	SCADA Analog data that is not AFSK (variable tone, DTMF, etc.)
7K30F1D	Futurecom "MOBEXCOM" DVRS (mobile repeater) data (P25 waveform, slightly narrower occupied bandwidth)
7K30F1E	Futurecom "MOBEXCOM" DVRS (mobile

7K60FXD	repeater) voice (P25 waveform, slightly narrower occupied bandwidth)
7K60FXE	2-slot DMR (Motorola MOTOTRBO) TDMA data
8K10F1D	2-slot DMR (Motorola MOTOTRBO) TDMA voice
8K10F1E	P25 Phase I C4FM data
8K10F1W	P25 Phase I C4FM voice (typically used for single-site systems; P25 mode in RRDB)
8K30F1D	P25 Phase II subscriber units (Harmonized Continuous Phase Modulation - H-CPM)
8K30F1E	12.5 kHz data NXDN (IDAS, NEXEDGE)
8K30F1W	12.5 kHz voice NXDN (IDAS, NEXEDGE)
8K30F7W	P25 Phase I C4FM hybridized voice and data applications (most commonly seen on trunked licenses)
8K50F9W	12.5 kHz voice and data NXDN (IDAS, NEXEDGE)
8K70D1W	Harris OpenSky (2 slot narrowband)
9K30F1D	P25 Linear Simulcast Modulation ASTRO (9.6 kbps in 12.5 kHz channelspace)
9K80D7W	SCADA/ Remote Control
9K70F1D	P25 Phase II fixed-end 2-slot TDMA (Harmonized Differential Quadrature Phase Shift Keyed modulation - H-DQPSK), per Motorola literature
9K70F1E	P25 Linear Simulcast Modulation "WCQPSK" data (per Harris MASTR-V literature)
9K80F1D	P25 Linear Simulcast Modulation "WCQPSK" voice (per Harris MASTR-V literature)
9K80F1E	P25 Phase II fixed-end 2-slot TDMA H-DQPSK data, per Harris MASTR-V literature
10K0F1D	P25 Phase II fixed-end 2-slot TDMA H-DQPSK voice (interpolation of MASTR-V literature)
10K0F1D	LTI Automated Vehicle Location (AVL) system - LT6 Radio Modem
10K0F1D	Motorola 3600 baud trunked control channel on narrowband channel
10K0F1D *	Motorola Widepulse ASTRO simulcast data
10K0F1D *	Motorola Widepulse ASTRO simulcast control channel
10K0F1E *	Motorola Widepulse ASTRO simulcast voice
11K2F3E	2.5 kHz deviation FM "narrowband 12.5 kHz" analog voice (FMN mode in RRDB - may also be 11K0 and 11K3 bandwidth)
12K1F9W	Harris OpenSky (NPSPAC - 4 slot)
13K1F9W	Harris OpenSky (SMR - 4 slot)
13K6W7W	Motorola iDEN (900 MHz)
14K0F1D (NPSPAC)	Motorola 3600 baud trunked control channel
16K0F1D *	Motorola 3600 baud trunked control channel
16K0F2D *	4 kHz deviation FM audio frequency shift keying (72 MHz fire alarm boxes)
16K0F3E *	4 kHz deviation FM analog voice (NPSPAC) (FM mode in RRDB)
16K8F1E *	Encrypted Quantized Voice (Motorola DVP, DES, DES-XL on NPSPAC)
20K0D1W	TETRA - PowerTrunk 4/TDMA fixed-end (simultaneous mixed modes - 6.25 kHz equivalency in legacy wideband channelspace)
20K0D1E	TETRA - PowerTrunk 4/TDMA fixed-end (voice - 6.25 kHz equivalency in legacy wideband channelspace)
20K1D1D	TETRA - PowerTrunk 4/TDMA fixed-end (data - 6.25 kHz equivalency in legacy wideband channelspace)
20K0F1E *	Encrypted Quantized Voice (Motorola DVP,

20K0F3E * DES, DES-XL - NOT P25 DES-OFB/AES)
5 kHz deviation FM "wideband 25 kHz" analog
voice (FM mode in RRDB)
20K0G7W Motorola iDEN (800 MHz)
20K0W7W Motorola iDEN (800 MHz)
300KF8E Broadcast FM with Subsidiary Carrier (SCA)
2M40W7D Remote Control Video (digital, non-NTSC)
6M25C3F NTSC Video

ILLINOIS

Mike Dickerson
ScannerDigest@gmail.com

I have really been lacking of following the radio happenings in Illinois. I have kept rather busy with life and a new interest in a few other things. I have tried to compile a list of some of the recent and future radio happenings across Illinois to share with any of the subscribers. I am not really sure if anyone from Illinois is a subscriber since I have never received any emails requesting or providing any information. Here is what is going on around Illinois.

The City of Joliet's police and fire department are in the process of migrating to Starcom21, the statewide digital system. They have applied for some new frequencies and will utilize their already licensed frequencies also. The locals are saying that you might be able to monitor them soon from T113 the Will County, IL tower, where the newly licensed frequencies have shown up. There are also reports that testing has been occurring. But wait; don't get your hopes up of hearing entire communications via Starcom 21. The online discussions lean to the point that its possible the PD and FD are going to be fully encrypted. There are hopes of still hearing the fire department on VHF, as that is said to be their backup system, and they will use VHF for inter-op with neighboring agencies.

Earlier this year Christian County, IL moved to a new countywide dispatch for fire and ambulance from the prior channel. They are now using 151.430, which is on a high structure and carries the signal very well.

EASTERN PENNSYLVANIA

Steve Bower, Jr.
Stevscan60@yahoo.com

First off would like to apologize for the delays in having any article submitted to this publication. Wish everyone a Safe & Happy Holiday Season and all the best in 2013. Those along New Jersey & New York coast dealing with the mess that Super storm Sandy left, just wanted to say our hearts are with you in this time of need. I was able to view some recent pictures from Thanksgiving in some communities and the damage still seen is amazing. Stay strong!!

The world of communications has numerous changes for us in Lehigh County, Pa. The County has issued all departments switch to the Narrowband settings as soon as possible. The department I run with was just taken care of and to be honest the audio sounds worse than it was before. All 911 center equipment was already switched over meaning additional tones when alerting companies until everyone has switched over.

Allentown City 800Mhz EDACS System just switched over the police department to all Digital and the VHF links except EMS were taken down mostly due to cost as well, This is the frequency set up:

01 855.21250 02 856.43750 03 856.93750
04 857.43750 05 857.93750 06 858.43750
07 858.93750 08 859.43750 09 859.93750
10 860.93750

The talk group IDs can be found at:
<http://www.radioreference.com/apps/db/?sid=401>

With technology at everyone finger tips the world of reporting news and breaking incidents have changed. Facebook although many agencies and departments have policies regarding this social media network it's the best way to get news out quick during emergencies. LIKE our Facebook pages: Fire/EMS Alerts of Carbon County & Fire/EMS Alerts of Lehigh County

Until next time, hope everyone enjoys Holiday Season.. As Always Be Safe & Take Care **Steve**

The following link below is a video explaining the PA-STARNet radio system.

http://www.apcotv.com/conference/2011_reports/pa_starnet_creating_interoperability_in_pennsylvania/

MASSACHUSETTES

Peter Szerlag
zerg90@gmail.com

Welcome to this edition of the Massachusetts column -

Brockton Mass is applying for 462.1625 R + 463.7125 R -
<<http://wireless2.fcc.gov/UlsApp/ApplicationSearch/applAdminAttachments.jsp?applID=7212748#>>

- check out the attachments for some mega lists of UHF freqs in the Boston Mass area

MBTA TRS info -
<<http://www.radioreference.com/apps/db/?sid=3476>>-
freqs - channels - talkgroups

124.40 - Boston Approach freq - FLINT 12 was heard recently - reportedly this is a DEA callsign

Haverhill FD is licensed for 151.295 - anyone hear them on this freq?

160.02 R - DPL 311 - as of Nov 30 2012, Cataldo Ambulance Service P10 is heard using this freq in the Newburyport area. Previously AMR used this freq for their ambulances in the Newburyport area.

453.30 - DPL 565 - someone keys up on this freq once in a while but doesn't say anything

471.0625 R - PL 74.4 - someone was doing a SWAT type drill on this freq - 29 Nov 2012 - probably Brookline

484.8875 now has loud digital traffic - maybe NSTAR - first heard late Nov 2012

463.1875 - PL 123.0 - Holy Family Hospital in Methuen took patient info from an incoming EMS unit - November 29, 2012 - I think this is the first time that I have heard one of the new CMED channels used

462.95 - PL 123.0 - Lowell and Lawrence medics - new PL

The Hale and Dorr law firm seeks 462.35 R at 60 State St in downtown Boston. This is a highrise office building. Perhaps the freq will be used by messengers or mtnc people.

461.6125 R has been licensed at 930 Commonwealth Ave in Boston. Perhaps it is for Boston University ops.

November 29 2012 - Cambridge suffered a large power failure. The city's 800 mhz TRS apparently went into failsafe mode. ECC was only talking on Fire Channel 1 and Police Channel 1 for a while.

Recent new scanner feeds for Massachusetts include - Barre - Groton FD - Quincy - Marblehead - Marlboro (on Justin TV - on night that Marlboro PD killed one person) - Hopkinton - Bristol County - Dartmouth FD - Granby - Nahant plus Boston EMS and Boston CMED - Salem PD - Fire Mutual Aid District 6 - Brockton FD - Georgetown - Leominster PD - North Andover FD - for the complete list please see - <https://docs.google.com/spreadsheets/ccc?key=0AoX8tpb0l73sdEt2Nm5lOTJacWN4UE9NT1lpdUhzemc#gid=0>

That's all for now. Have a good one. Peter Sz

WESTERN PENNSYLVANIA

Frank Speicher K3FS
k3fs@pghscanner.com
<http://www.pghscanner.com>

Allegheny County usually has one channel in each zone designated as Public Safety. The only zone without a public safety channel is the west Zone. The public safety channels are very flexible in their usage, and serve many purposes. If all fire operations channels are used with working fires, the next incident could then be placed on the public safety channel. A working fire incident can also use the public safety channel as a secondary ops channel, to set up staging, or some other operation without interfering with the main fire operations. If a police department would have a working incident, that police channel would be closed to traffic only relating to that incident. All other departments would be instructed to go to their back up channels, and this may include using the public safety channel. Public safety can be used for an incident requiring multiple agencies to respond. One example would be a motor vehicle accident with multiple injuries. Police, fire, and EMS responding to the incident can respond on one channel, coordinate their activities, and not interfere with other users. There are more uses, but this should help give some idea of what to expect on those frequencies. They may not be used very often, but they are channels I keep in the scanners.

In the south zone there are two public safety channels. One is referred to as Mt. Lebanon Public Safety, 472.175 PL 100.0, and the other is South Public Safety 460.200 PL 110.9. These channels do serve as the back up channels to the police agencies as there is no police channel two in the south zone. East Public Safety is 472.8375 PL 203.5. North zone calls theirs North EMA 472.0375 PL 103.5. Central zone, or the city of Pittsburgh uses Ch. 7 453.450 as needed. Allegheny County Regional 471.1375 PL 156.7 is available to all agencies in the county and has been used for large incidents.

Allegheny County used to use three channels for Allegheny County police and sheriff. Recently a new Allegheny county police and sheriff frequency was put into service, 494.800 PL 141.8. All Allegheny county police (#1--, to #4--), sheriff (#5--), detectives (#D--), medical examiner (#ME--), and Allegheny county housing police (#6--) are dispatched on and use this frequency. The Allegheny county housing police has been heard on other police frequencies when there is a call that involves an Allegheny county housing property.

Two out three of the old Allegheny county police and sheriff frequencies have found new usage in the East zone. 470.3375 PL 141.3 is now East police ch. 4. Braddock (#21--), East McKeesport (#25--), East Pittsburgh (#26--), North Braddock (#24--), Rankin (#36--), and Turtle Creek (#38--) police departments all use this frequency now. 470.3125 PL 107.2 is now East police ch. 5. Braddock Hills (#22--), Chalfont (#28--), Churchill (#23--

), Edgewood (#27--), Forest Hills (#28--), Swissvale (#37--), Wilkins (#41--), and Wilkesburg (#42--), now use this channel.

The East zone has been undergoing the most changes lately. In addition to the two new police channels, two more communities have switched to Allegheny county 911. Turtlecreek, and East Pittsburgh police, and fire have moved over to Allegheny county 911 dispatch. With those moves, the last fire department on low band has moved to UHF. I cannot think of any agencies in Allegheny county that are still using low band at this point.

Allegheny county 911 still uses a few VHF frequencies, mostly in the North zone. There will likely be changes to UHF of all agencies dispatched by 911. Allegheny county has been making the transition to all UHF and has made good progress. Now a UHF radio can be used to contact most agencies, and operate on all of the simplex ops channels. Not too long ago, it was not uncommon to need two to three radio to be able to communicate to neighboring agencies.

You can email me at k3fs@verizon.net with any questions or suggestions. To clarify I do not maintain the k3fs.com or any other k3fs domains. These have been registered by Richard E. Christian. He had also taken the information off my sites at that time. Since then he has placed a stop SOPA page up, but the other page are still there. I maintain the website <http://www.pghscanner.com>

SOUTHERN NEW JERSEY

*Column Editor Wanted
Position Open*

YE WQJZ399

CAMDEN, COUNTY OF

854.1375	FB2	854.1375	FB2	854.1875	FB2
854.1875	FB2	854.1875	FB2	854.3625	FB2
854.3625	FB2	854.1375	FB2	854.1375	FB2
809.1375	MO	854.1875	FB2	854.1875	FB2
809.1875	MO	854.1375	FB2	854.3625	FB2
809.3625	MO	854.1875	FB2		

854.1375	FB2	854.3625	FB2
854.1875	FB2	854.3625	FB2
854.3625	FB2	854.1375	FB2
854.3625	FB2		

Re-Chargeable Battery Lifespans

Sources differ on how long the various battery types last per charge, but the total number of charging cycles you can expect for a particular battery type can vary.

Compiled from multiple sources, here are the most charge cycles that can be expected.

Lead-Acid	300-500	NiCad	500-1000
NiMH	500	Lithium-Ion	1000+

We're looking for photos!

We're looking for photos to be submitted for the Scanner Digest Newsletter. Contact us for details.

ScannerDigest@gmail.com

Printed versions of the Scanner Digest Newsletter are available.

\$1.00 per issue shipped via book rate USPS. Checkout the website for specific issues. Get them now. Potential collector's item.

ScannerDigest@gmail.com

ScannerDigest Newsletter

Welcome to the Scanner Digest Newsletter! We're currently publishing quarterly e-magazine containing information for the scanner hobbyist. If it can be monitored on a scanner, we'll attempt to cover it from 30 to 1300 MHz and beyond!

Our purpose is to produce a newsletter to facilitate the exchange of information pertaining to the various services covered by a typical scanner radio. Dedicated regional column editors make up the heart of this publication.

The Scanner Digest Newsletter is not responsible for the accuracy or consequences incurred regarding the use of information listed in this publication. Since the purpose of this newsletter is to provide a platform for the submission and exchange of radio communication information, it thus becomes impossible to deem all contents as accurate. The very nature of radio licensing and usage makes it difficult to verify the accuracy of the information contained within. Generally information listed within the pages of the newsletter are derived from multiply sources including current FCC files, hobbyists and those directly involved with various public safety agencies.

Scanner Digest's policy has been not to limit or edit the individual columns submitted, unless we deem the information sensitive in nature which may jeopardize the safety of the parties involved.

Only in this case will we edit out this type of input.

(Example: We will not publish the frequencies used by a law enforcement surveillance team.)

Naturally the comments of the various column editors are not necessarily the views and opinions of the Scanner Digest Newsletter. All materials, maps, information, photographs submitted to a regional column editor or to Scanner Digest directly, become sole property of the Scanner Digest Newsletter. We encourage and will make every effort to give proper credit to all submissions. All contents within are copyrighted. ©2003-2013

Subscription Information

Subscriptions are acknowledged via email. Currently Scanner Digest Newsletter produces four (4) issues per year. Newsletters will be emailed to subscribers to via an attachment. The attached document will be in the popular Adobe Acrobat PDF file. By accepting these terms you are made aware of the consequences of opening such attachments. We will scan each outgoing email with an anti-virus tool to minimize any possibility of transmitting an infectious message.

Email inquiries to: ScannerDigest@gmail.com
Visit our website: www.ScannerDigest.com

